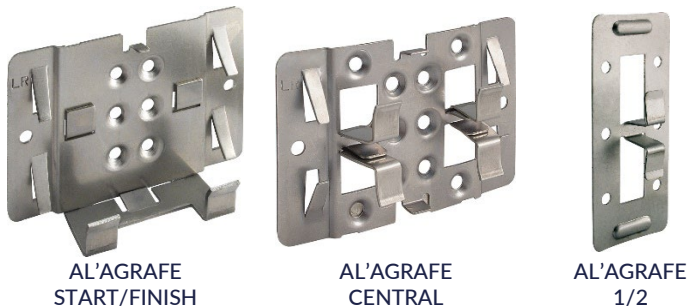


AL'AGRAFE STAINLESS STEEL A2 - START/FINISH - CENTRAL - 1/2



AL'AGRAFE
START/FINISH

AL'AGRAFE
CENTRAL

AL'AGRAFE
1/2

PRODUCT DEFINITION

- AL'AGRAFE thickness 10/10^{ème} mm cuted – stamped.
- START/FINISH and CENTRAL versions consist of a base on which are clipped retaining hooks.
- 1/2 version consists of monobloc retaining hooks.

SCOPE OF APPLICATION

- Attaching 10,5 mm thickness ceramic onto a timber or aluminium framework.
- AL'AGRAFE for fixing other tile thickness available on request.

MATERIAL & FINISH

Material:

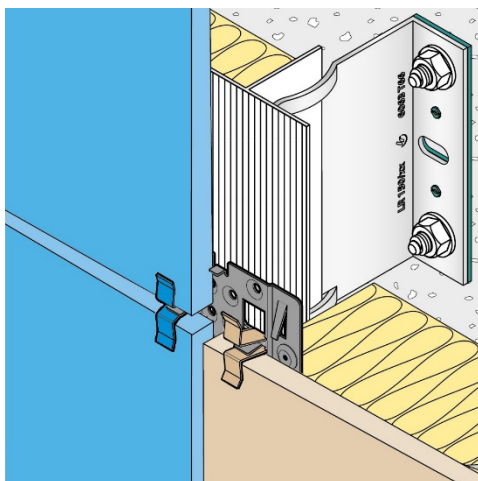
- Austenitic stainless steel A2 (AISI 301) – 1.4310 according to NF EN 10088.

Painting:

- Epoxy, polyester or polyurethane paint (Large range of colours available)
 - Paint thickness according to FT 4453.
 - The colour coating is only for aesthetic purposes. It does not affect the nominal mechanical proprieties.
- On case of a coating deterioration, this product keeps its performance and does not derogate from the main function for which is intended.

INSTALLATION

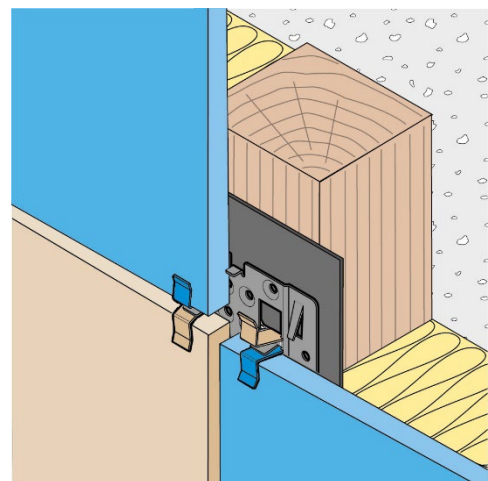
Aluminium framework



Recommended fasteners:

- Rivet all stainless steel A2 Ø4x8 mm (code: 273 490)
- Drill bit HSS Ø4,2x75 mm (code: 281 991)

Timber framework

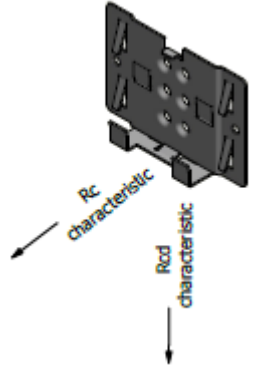
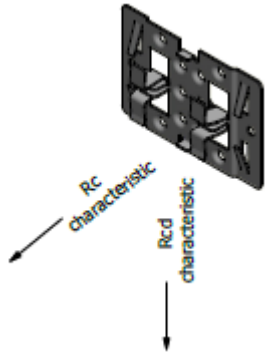
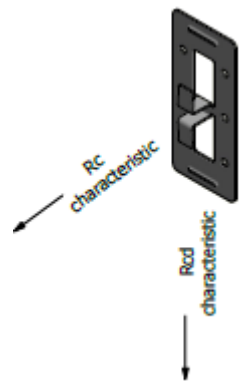


Recommended fasteners:

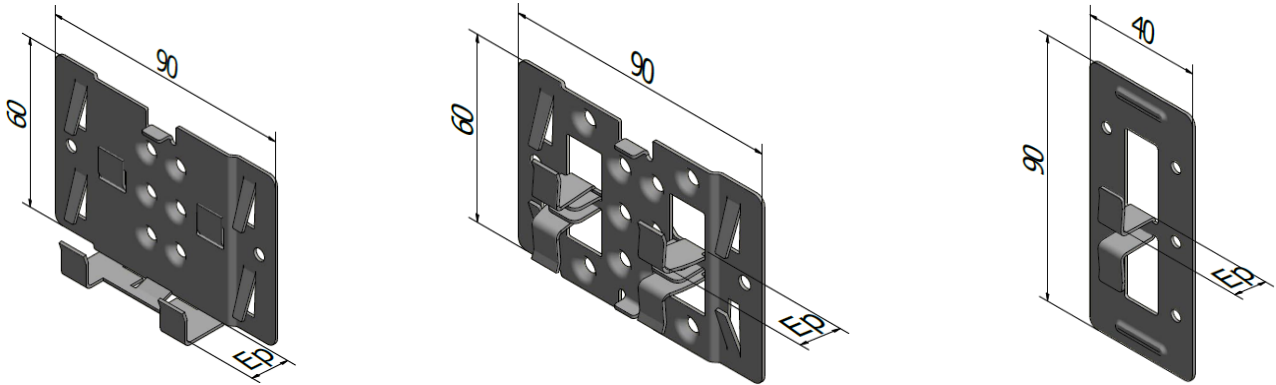
- VBU TF Pz2 stainless steel A2 Ø4x30 mm (code: 30 065)

PERFORMANCES

Characteristic strength:

Vertical load $R_{cd} \leq 0.2\text{mm (daN)}$	Horizontal load $R_c 1\text{mm (daN)}$	
≥ 25	≥ 30	
≥ 25	≥ 30	
≥ 25	≥ 30	

DIMENSIONS & CODES



Fitted model	Thickness (Ep in mm)	Code	
		Naturel	Laqué
AL'AGRAFE START & FINISH FITTED (Base + Hook)	10.5	366 920	366 921*
AL'AGRAFE CENTRAL FITTED (Base + Crochet)	10.5	366 940	366 941*
AL'AGRAFE 1/2 (Monobloc)	10.5	366 952	366 953

(*) Black painted base - Hook painted in all RAL shades

Not fitted model	ÉP. (mm)	Code	
		Naturel	Laqué
AL'AGRAFE START & FINISH NOT FITTED (Base only)	10.5	366 911	366 916
AL'AGRAFE START & FINISH NOT FITTED (Hook only)	10.5	366 913	366 917
AL'AGRAFE CENTRAL NOT FITTED (Base only)	10.5	366 931	-
AL'AGRAFE CENTRAL NOT FITTED (Hook only)	10.5	366 933	366 937

Ep: Ceramic thickness

CONFORMITY

- Complies with Technical Notice of CSTB 2.2 / 11-1454_V2 for RF.CERAM exterior wall cladding.
- The characteristic resistances come from tests carried out by the LR ETANCO laboratory.
- Reaction to fire: A1 according to NF EN 13501-1.

Registration date: 2024/04/25 - Revision B

LR ETANCO is associate member of:



LR ETANCO - Parc les Érables - Bât. 1 - 66 Route de Sartrouville
78231 Le Pecq Cedex France - www.etanco.eu

Tel : +33 (0)1 34 80 52 00 - commercial.france@etanco.fr

MARKING & LABELLING

Fitted model:

- On packaging: AL'AGRAFE/M START/FINISH BASE+HOOK + CODE.
- On packaging: AL'AGRAFE/M START/FINISH BASE+HOOK + COLOUR + CODE.
- On packaging: AL'AGRAFE/M CENTRAL BASE+HOOK + CODE.
- On packaging: AL'AGRAFE/M CENTRAL BASE+HOOK + COLOUR + CODE.
- On packaging: AL'AGRAFE 1/2 MONOBLOC.
- On packaging: AL'AGRAFE 1/2 MONOBLOC + COLOUR + CODE.

Not fitted model:

- On packaging: AL'AGRAFE/NM START/FINISH BASE + CODE.
- On packaging: AL'AGRAFE/NM START/FINISH HOOK + CODE.
- On packaging: AL'AGRAFE/NM START/FINISH BASE + COLOUR + CODE.
- On packaging: AL'AGRAFE/NM START/FINISH HOOK + COLOUR + CODE.
- On packaging: AL'AGRAFE/NM CENTRE BASE + CODE.
- On packaging: AL'AGRAFE/NM CENTRE HOOK + CODE.
- On packaging: AL'AGRAFE/NM CENTRE HOOK + COLOUR + CODE.

QUALITY CONTROL

- ISO 9001 certified quality management system according to the certificate in force.

NOTA

These products are intended for professional installers landlords whose the related service includes supply and installation. In accordance with rules and normative regulation, it's their responsibility to check that the use of these products is in conformity to themselves needs and their customers. They have to insure as well the adequacy of this material with their real operating conditions. The company excludes any guarantee for the use that does not respect these conditions. His responsibility is limited to the strict compliance with the specifications stipulated on the customer's purchase order. The guarantee is limited to the replacement of defective parts acknowledged by the Company's technical service, without workforce costs and travel expenses. It excludes material damage or physical injury and others direct or indirect damages, material or immaterial, which may result from defective parts including installation that not complying with the use for which they are designed and produced.

Registration date: 2024/04/25 – Revision B

LR ETANCO is associate member of:



LR ETANCO - Parc les Érables - Bât. 1 - 66 Route de Sartrouville
78231 Le Pecq Cedex France - www.etanco.eu

Tel : +33 (0)1 34 80 52 00 – commercial.france@etanco.fr