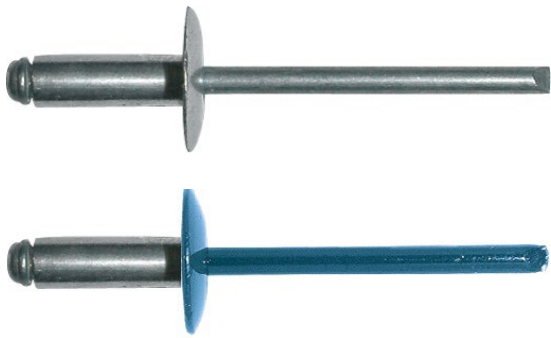


## RIVET/RIV-COLOR ALU/STAINLESS STEEL A2 O.T. Ø4.8xL LF14



### PRODUCT DEFINITION

- Open type rivet with large flange head.
- Natural flange head or painted (RIV-COLOR).

### SCOPE OF APPLICATION

- Intended to assemble 2 thin elements together.
- Mounting façade panels in line with most manufacturer's technical recommendations.

### MATERIAL & FINISH

#### Material:

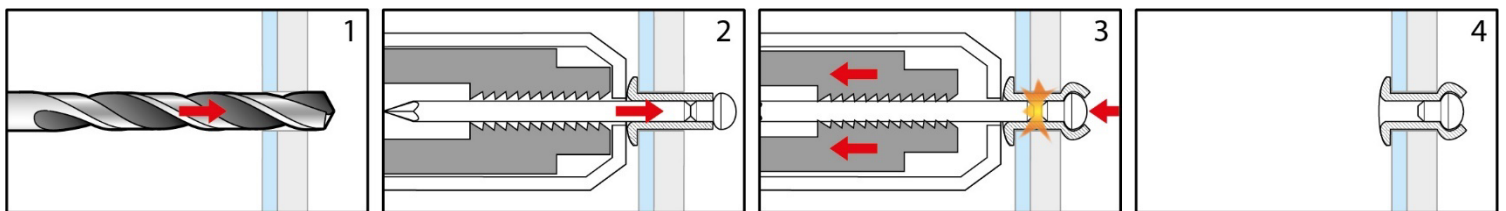
- Body in aluminium.
- Mandrel in austenitic stainless steel A2 (AISI 304).

#### Painting:

- Epoxy, polyester or polyurethane paint ( Wide range of colours available).
- Thickness of painting according to TDS N°4453.
- The painting only gives an aesthetic character. It does not prejudice the nominal mechanical strengths.  
In case of painting degradation, this product preserves its performance and does not derogate from the main function for which it is intended.

### INSTALLATION

1. Drilling of the elements to be riveted .
2. Insert the nail of the rivet into the riveter and position the body of the rivet in the hole.
3. Expanding the rivet with the riveter.
4. The mandrel has broken, the rivet is in place.



#### Recommended tools:

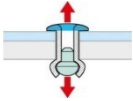
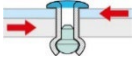
- DEGOMETAL GO265 18V cordless riveter (code: 273 334)
- MILWAUKEE M12 12V cordless riveter (code: 324 685)
- Drill bit HSS Ø5x86 mm (code: 282 020)
- Drilling centerer tool for façade panels (code: 284 000)
- Riveter tip specially for façade panels (code: 611 111)

#### Associated products:

- Rivet/RIV-COLOR alu/stainless steel A2 O.T. Ø4,8xL ELF16 (See TDS n° 4512)
- Rivet/RIV-COLOR alu/stainless steel A4 O.T. Ø4,8xL ELF16 (See TDS n° 4547)

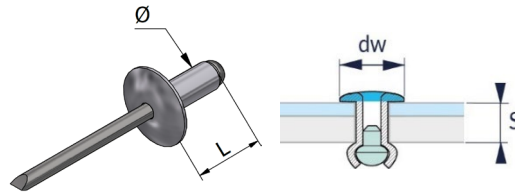
## PERFORMANCES

Characteristics strengths:  
According to NF EN ISO 14589:2001

Strength	Value (daN) <sup>(1)</sup>	
Characteristic tensile strength	$F_{\text{tens}} = 260$	
Characteristic shearing strength	$F_{\text{shear}} = 185$	

<sup>(1)</sup> These values do not include safety coefficient.

## DIMENSIONS & CODES



Ø x L. (mm)	d <sub>w</sub> (mm)	S <sub>mini</sub> (mm)	S <sub>maxi</sub> (mm)	d <sub>o</sub> (mm)	Code	Code
					NATURAL RIVET	RIV-COLOR
4,8 x 22	14	15	17	5	270 570	270 571

Ø: nominal diameter - L.: length - d<sub>w</sub>: flange head diameter - S<sub>mini</sub>: recommended minimum nominal grip thickness - S<sub>maxi</sub>: recommended maximum nominal grip thickness - d<sub>o</sub>: drilling diameter to be adjusted according to expansion, value given for information.

## ACCORDANCE

- The characteristic strengths are from tests conducted according to standard EN ISO 14589:2001: Blind rivets - Mechanical testing.
- LR ETANCO recommends that you perform on-site tests to assess the behaviour of the rivet in an assembly whose grip thickness is outside of S<sub>mini</sub> and S<sub>maxi</sub>.

## MARKING & LABELLING

- On packaging, natural rivet: RIVET Al/SS A2 O.T. Ø4.8 x L + LF14 + CODE.
- On packaging, painted rivet: RIVCOLOR Al/SS A2 O.T. Ø4.8 x L + LF14 + COLOUR + CODE.

## QUALITY CONTROL

- ISO 9001 certified quality management system according to the certificate in force.

Registration date: 2022/11/16 - Revision B

LR ETANCO is associate member of:



LR ETANCO - Parc les Érables - Bât. 1 - 66 Route de Sartrouville  
78231 Le Pecq Cedex - France - [www.etanco.eu](http://www.etanco.eu)

Tel : +33 (0)1 34 80 52 00 - [commercial.france@etanco.fr](mailto:commercial.france@etanco.fr)

**NOTA**

These products are intended for professional installers landlords whose the related service includes supply and installation. In accordance with rules and normative regulation, it's their responsibility to check that the use of these products is in conformity to themselves needs and their customers. They have to insure as well the adequacy of this material with their real operating conditions. The company excludes any guarantee for the use that does not respect these conditions. His responsibility is limited to the strict compliance with the specifications stipulated on the customer's purchase order. The guarantee is limited to the replacement of defective parts acknowledged by the Company's technical service, without workforce costs and travel expenses. It excludes material damage or physical injury and others direct or indirect damages, material or immaterial, which may result from defective parts including installation that not complying with the use for which they are designed and produced.

**Registration date: 2022/11/16 - Revision B**

LR ETANCO is associate member of:

**LR ETANCO** - Parc les Érables - Bât. 1 - 66 Route de Sartrouville  
78231 Le Pecq Cedex - France - [www.etanco.eu](http://www.etanco.eu)Tel : +33 (0)1 34 80 52 00 - [commercial.france@etanco.fr](mailto:commercial.france@etanco.fr)