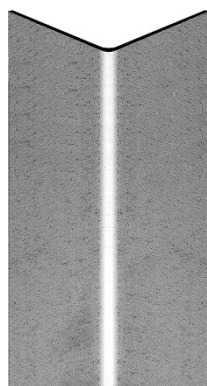


## ANGLE BAR – Z450 GALVANIZED STEEL



DTU  
45.4

CEC  
3194

### PRODUCT DEFINITION

- L-shaped cold-formed steel profile.
- Thickness 15/10th.

### APPLICATION

- Metal framing system with or without insulation for the fixing of façade panels.
- ANGLE BAR profile for ISOLCO 3000 P2 bracket, SPIDO extension (horizontally) and GRISBY extension (vertically).

### MATERIAL & FINISH

#### Material:

- Structural steel S220GD – 1.0241 according to NF EN 10346.

#### Coating:

- Galvanization Z450 – Thickness  $\geq 32 \mu\text{m}$  (450g/m<sup>2</sup> double-sided) according to NF EN 10346.

### IMPLEMENTATION



#### Associated Product:

- ISOLCO 3000 P2 M8 M10 bracket (refer to TDS n° 4030)
- ISOLCO 3000 P2 M8 M10 clip bracket (refer to TDS n° 3233)
- GOLDOVIS 5 TH8 2C Ø5.5x25 mm (code: 331 152)
- FASTOVIS PI TH8 2C Ø5.5x25 mm (code: 335 691)

### PERFORMANCE

Section (mm)	Depth (mm)	Width (mm)	Thickness (mm)	Inertia I (mm <sup>4</sup> )	Flexural modulus I/V (mm <sup>3</sup> )
50x50	50	50	1,5	37355	1011
50x100	50	100	1,5	44907	1093

Registration date: 29/07/2024 – Revision B

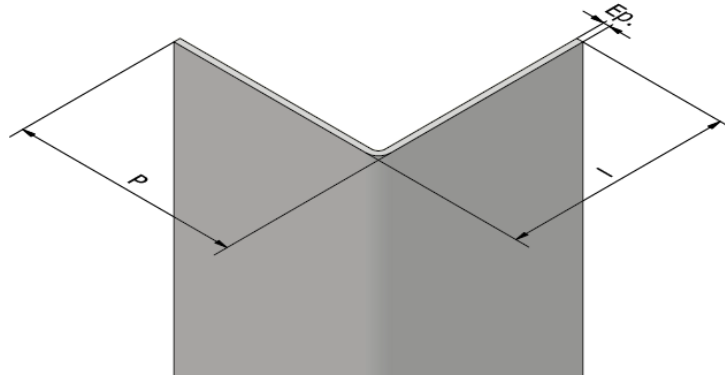
LR ETANCO is associate member of:



LR ETANCO - Parc les Érables - Bât. 1 - 66 Route de Sartrouville  
78231 Le Pecq Cedex France - [www.etanco.eu](http://www.etanco.eu)

Tel: +33 (0)1 34 80 52 00 - [commercial.france@etanco.fr](mailto:commercial.france@etanco.fr)

## DIMENSIONS & CODES



Section (mm)	P (mm)	l (mm)	Ep. (mm)	Length (m)	Code
50x50	50	50	1,5	4	611 590
50x100	50	100	1,5	3	611 594

P.: Depth - l.: Width - Ep.: Thickness

## CONFORMITY

- French standard: DTU 45.4.
- French specifications: CSTB 3194 specifications.
- Reaction to fire: A1 according to NF EN 13501-1.

## MARKING & LABELLING

- On packaging: ANGLE BAR + SECTION + TOTAL LENGTH + CODE.

## QUALITY CONTROL

- ISO 9001 certified quality management system according to the certificate in force.

## NOTE

These products are intended for professional installers landlords whose the related service includes supply and installation. In accordance with rules and normative regulation, it's their responsibility to check that the use of these products is in conformity to themselves needs and their customers. They have to insure as well the adequacy of this material with their real operating conditions. The company excludes any guarantee for the use that does not respect these conditions. His responsibility is limited to the strict compliance with the specifications stipulated on the customer's purchase order. The guarantee is limited to the replacement of defective parts acknowledged by the Company's technical service, without workforce costs and travel expenses. It excludes material damage or physical injury and others direct or indirect damages, material or immaterial, which may result from defective parts including installation that not complying with the use for which they are designed and produced.

Registration date: 29/07/2024 - Revision B

LR ETANCO is associate member of:



LR ETANCO - Parc les Érables - Bât. 1 - 66 Route de Sartrouville

78231 Le Pecq Cedex France - [www.etanco.eu](http://www.etanco.eu)

Tel: +33 (0)1 34 80 52 00 - [commercial.france@etanco.fr](mailto:commercial.france@etanco.fr)