

ISOPLUS Ø8xL – POLYPROPYLENE / ZINC PLATED STEEL



PRODUCT DEFINITION

- Anchor for External Thermal Insulation Composite System (ETICS).
- Controlled deformation anchor with pre-fitted screw.
- Head Ø60 mm.
- Additional plate Ø100 mm.
- Installation: On the surface of the insulation or in the insulation with external insulation cover.
- Dismountable.

SCOPE OF APPLICATION

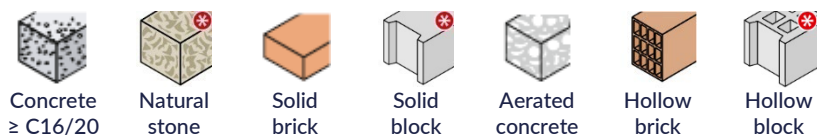
- Fastening of rigid and semi-rigid insulation.
- Anchor for concrete, aerated concrete, hollow masonry and solid masonry (categories A / B / C / E)
- High fixed thickness, up to 250 mm of insulation.
- Installation temperature $\geq 0^{\circ}\text{C}$.
- UV exposure ≤ 6 weeks.

MATERIAL & FINISH

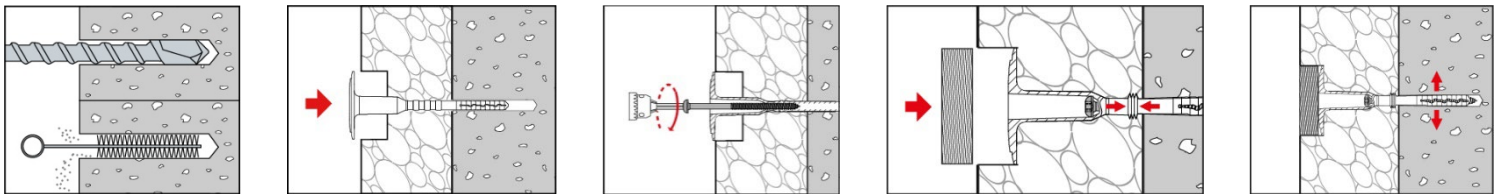
Material:

- Anchor sleeve: White polypropylene.
- Expansion screw: Electrogalvanized steel $\geq 5 \mu\text{m}$.
- Additional plate Ø100: White polypropylene.
- PSE cover and PSE plug: White polystyrene foam.
- MW cover: Mineral wool.

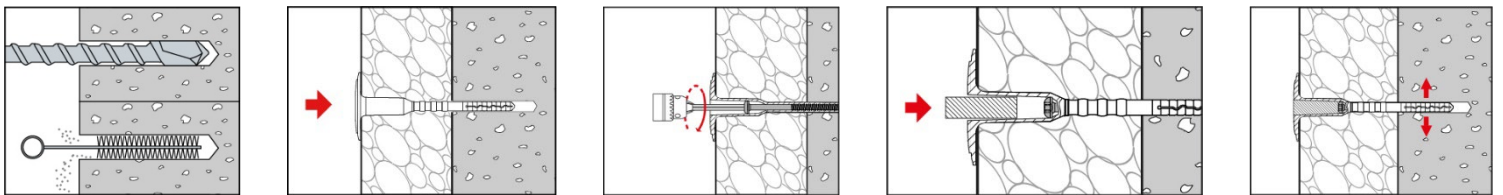
INSTALLATION



Installation in the insulation with external insulation cover:



Installation on the surface of the insulation:



Related products:

- Screw-driver ISOPLUS length 170 mm with Torx bit n° 25 (code: 357 910)
- PSE plastic tool ISOPLUS (code: 357 906)
- Washer-cutter ISOPLUS (code: 357 912)
- PSE cover Ø70 ISOPLUS (code: 357 900)
- MW cover Ø70 ISOPLUS (code: 357 902)
- Bouchon PSE Ø14 ISOPLUS (code: 357 908)



PSE cover Ø70 ISOPLUS



MW cover Ø70 ISOPLUS



PSE plug Ø14 ISOPLUS



PSE plastic tool ISOPLUS



Washer-cutter ISOPLUS



Screw-driver ISOPLUS - length 170 mm with Torx bit n° 25

Recommended tools:

- Cordless hammer drill MILWAUKEE M28 CHPX-502C (code: 322 030)
- Hammer drill MILWAUKEE PH26 T (code: 324 781)
- Concrete drill bit SDS+ Ø8 mm (See chapter « Tools and accessories » of Anchoring booklet)
- Brushes (code: 344 856)

PERFORMANCES

Technical data according to ETA:

- The technical data allowing the precise calculation of anchor ISOPLUS are availed in the European Technical Assessment of this anchor. To obtain the European Technical Assessment or for precise calculation, you can use SPECIF Anchors software or contact our Anchor Department.
- ISOPLUS: ETA n° 22/0294 according to DEE 330196-01-0604.
- The number of anchors per m² is determined according to the CSTB specifications n° 3701 and 3707.
- We are communicating in this Technical Data Sheet, on the following pages, some examples of pre-calculated loads according to this ETA allowing you to assess the main performance of the anchors.

Recommended load or Service load $N_{rec}^{\#}$:

ISOPLUS IN CONCRETE			Ø8
(Hammer drilling)	h_{nom}	(mm)	50
Concrete \geq C16/20 - NF EN 206-1	N_{rec}	(daN)	46
Resistance class	-	-	2

ISOPLUS IN SOLID BRICK			Ø8
(Hammer drilling)	h_{nom}	(mm)	50
Solid brick - NF EN 771-1	N_{rec}	(daN)	46
Resistance class	-	-	2

ISOPLUS IN HOLLOW BRICK			Ø8
(Drilling without percussion)	h_{nom}	(mm)	50
MODUL BLOK 6/1 - $f_b \geq 14,4$ MPa - $\rho \geq 1783$ kg/m ³ - NF EN 771-1	N_{rec}	(daN)	18
Resistance class	-	-	6
POROTHERM 38 S LD - $f_b \geq 13,1$ MPa - $\rho \geq 1781$ kg/m ³ - NF EN 771-1	N_{rec}	(daN)	43
Resistance class	-	-	2

ISOPLUS IN AERATED CONCRETE			Ø8
(Drilling without percussion)	h_{nom}	(mm)	50
Aerated concrete - $f_b \geq 2,5$ MPa - $\rho \geq 350$ kg/m ³ - NF EN 771-4	N_{rec}	(daN)	23
Resistance class	-	-	5

$\# N_{Rd,u} = N_{Rk} / \gamma_M$ with $\gamma_M = 2,0$ and $N_{rec} = N_{Rd,u} / \gamma_{Mc}$ with $\gamma_{Mc} = 1,4$

N_{rec} : Recommended load or service - N_{Rk} : Tensile characteristic resistance - $N_{Rd,u}$: Ultimate load or design - γ_M et γ_{Mc} : partial safety factors

Point thermal transmittance according to Technical Report TR025 of the EOTA:

ISOPLUS			Ø8
Insulation thickness ≥ 60 mm	χ	(W/K)	0,000

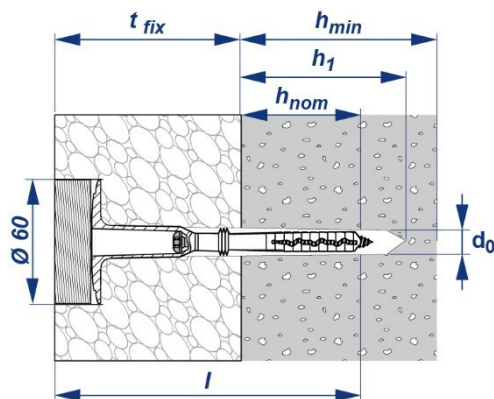
Plate stiffness according to Technical Report TR026 of the EOTA:

ISOPLUS			Ø8
Capacity of plate	Ø60	kN	1,9
Plate stiffness	Ø60	kN/mm	0,7

Minimum edge distance C_{min} and minimum spacing S_{min} :

ISOPLUS			Ø8
Concrete, aerated concrete, hollow masonry and solid masonry	C_{min}	mm	100
Concrete, aerated concrete, hollow masonry and solid masonry	S_{min}	mm	100

DIMENSIONS & CODES



ISOPLUS	d_0	t_{fix}	l^{**}	h_1	h_{nom}	h_{min}	Code
8/70x120	8	60-70	120	75	50	100	357 120
8/90x140		80-90	140				357 140
8/110x160		100-110	160				357 160
8/130x180		120-130	180				357 180
8/150x200		140-150	200				357 200
8/170x220		160-170	220				357 220
8/190x240		180-200	240				357 240
8/210x260		200-210	260				357 260
8/230x280		220-230	280				357 280
8/250x300		240-250	300				357 300

* t_{fix} = thickness of insulation + thickness of equalizing, layer or non-load bearing coating (t_{tol})

** Other lengths on request for higher insulation thicknesses

d_0 : diameter of drilling - t_{fix} : max thickness of the element to be fixed - l : anchor length - h_1 : min depth support drilling - h_{nom} : min installation depth - h_{min} : min thickness support.

Additional plate	Code
Ø100 mm	358 550

CONFORMITY

- European Technical Assessment: 22/0294 according to EAD 330196-01-0604.
- CE marking according to system 2+: n° 1404-CPR-3549 delivered by ZAG.
- Seismic resistance: No restriction of Resistance class for systems < 25 kg/m². Resistance class 1 to 4 only for systems ≥ 25 kg/m² and < 35 kg/m² (according to CSTB specifications n° 3699 V3).
- Fire resistance: Conform to the installation of fire-stop strips (according to CSTB specifications n° 3714 V2).
- LR ETANCO recommends that you carry out field tests to evaluate the behaviour of the anchor in a support material whose characteristics are not know.

MARKING & LABELLING

Anchor ISOPLUS:

- On packaging: ISOPLUS Ø8 / t_{fix} x L + CODE.

Additional plate ISOPLUS:

- On packaging: PLATE Ø100 + CODE.

QUALITY CONTROL

- ISO 9001 certified quality management system according to the certificate in force.

NOTA

These products are intended for professional installers landlords whose the related service includes supply and installation. In accordance with rules and normative regulation, it's their responsibility to check that the use of these products is in conformity to themselves needs and their customers. They have to insure as well the adequacy of this material with their real operating conditions. The company excludes any guarantee for the use that does not respect these conditions. His responsibility is limited to the strict compliance with the specifications stipulated on the customer's purchase order. The guarantee is limited to the replacement of defective parts acknowledged by the Company's technical service, without workforce costs and travel expenses. It excludes material damage or physical injury and others direct or indirect damages, material or immaterial, which may result from defective parts including installation that not complying with the use for which they are designed and produced.

Registration date: 2023/03/20 - Revision C

LR ETANCO is associate member of:



LR ETANCO - Parc les Érables - Bât. 1 - 66 Route de Sartrouville
78231 Le Pecq Cedex - France - www.etanco.eu

Tel: +33 (0)1 34 80 52 00 - commercial.france@etanco.fr