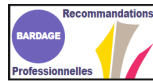


DRILLNOX 4 DF INOX A4 TH8 Ø 5,5 x L



ETE
25/0617
ETE
13/0180

PRODUCT DEFINITION

- Self-drilling screw Ø 5.5 mm bi-metal.
- Double head thread Ø 7 mm (DF) or Ø 6.2 (DFN) with clean stop to avoid deformation of the outer skin of the sandwich panel.
- Hex head of 8 mm.
- Ø 10.5 mm flange.
- A4 stainless steel.
- Natural or painted head.
- 1.81 mm pitch for lengths < 235 mm (DFN) and 2.54 mm under head thread for lengths ≥ 235 mm (DF).
- Drill point.
- Can be mounted with a VULCA washer.

APPLICATION

- Roofing: Fastening sandwich panels through the top of the corrugation (with saddle washer) on a wood frame.
- Cladding: Fastening sandwich panels on a wood frame.
- Very aggressive environment (off the seafront).
- Drilling capacity (CP): 1.5 to 4 mm of steel.

MATERIAL & COATING

Material:

- Screw body: Austenitic stainless steel A4 – 1.4404 - AISI 316L.
- Drill point and first threads: Treated carbon steel.
- VULCA washer: A2 (VI) stainless steel + EPDM (Ethylene Propylene Diene Monomer).

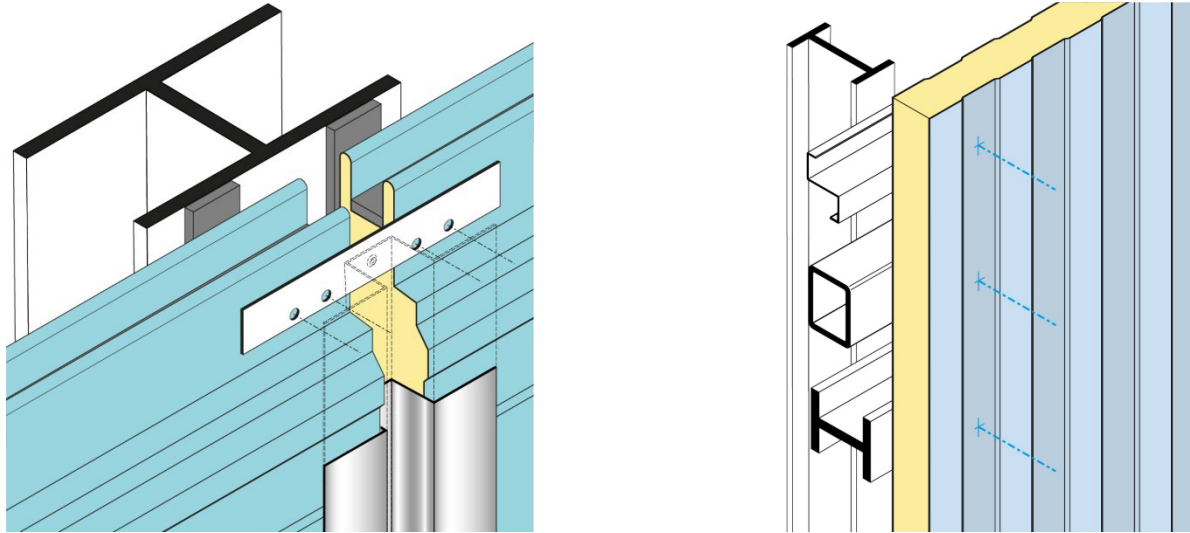
Painting:

- Epoxy, polyester or polyurethane paint (large range of colours available).
- Painting thickness according to TDS n° 4453.
- The colour coating only gives an aesthetic purpose. It does not affect nominal mechanical properties. On case of a coating deterioration, this product keeps its performance and does not derogate from the main function for which it is intended.

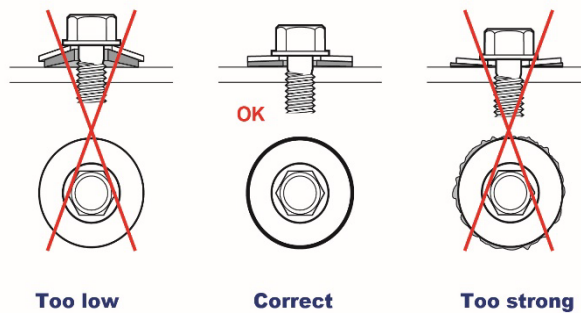
Corrosion resistance:

- Screw Body:
 - By Kesternich test according to NF EN ISO 22479:
 - Resist to more 30 cycles without the appearance of red rust.
 - By salt spray test according to NF EN ISO 9227:
 - No trace of red rust after 1000 hours.
- Drill point and 1st threads with surface coating:
 - By salt spray test according to NF EN ISO 9227:
 - No trace of red rust after 200 hours.

INSTALLATION



- The assembly is carried out using a FEIN ASCM 18-4 QM AS screwdriver with torque limiter and depth gauge with an 8 mm hexagonal socket.



Unauthorized machines:

- Nutrunners, impact wrenches, impact drivers are not suitable for assembly work and are strictly forbidden to use.

Recommended tools:

- FEIN ASCM 18-4 QM AS battery-powered screwdriver set + 2 batteries and 1 charger (code: 321 688).
- Depth stop for FEIN ASCM 18-4 QM AS (code: 321 686).
- 3rd Hand Set for TH8 Screws (Code: 320 153).
- 8 mm Lg 65 mm hexagonal socket (code: 323 500).

Associated Products:

- DRILLNOX 4 DF INOX A2 TH8 Ø 5.5 x L (Refer to TDS n° 4579).
- Saddle washer for trapezoidal corrugation (Refer to roofing booklet).
- Saddle washer for Cladding (Refer to cladding booklet).

PERFORMANCE

Mechanical properties of the EPDM of the VULCA washer:

- **Hardness** : 58 ± 5 SHORE A.

Drilling time :

- **Materials tested**: S355 JR structural steel.
- **Tools used**: FEIN ASCM 18-4 QM AS screwdriver with torque limiter and depth gauge.

Drilling test	Unit	Ø 5,5
Drilling Time	dry/mm	< 2
Rotational speed	RPM	2000 *
Axial load	dan	20

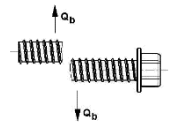
(*) Actual under load: 1800 rpm

Characteristic resistances:

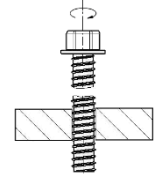
- Characteristic tensile Strength: $\bar{x} = 784 \text{ daN}$



- Characteristic shear strength - 0.6 x Rm: $\bar{x} = 470 \text{ daN}$



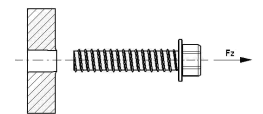
- Characteristic torque strength: $\bar{x} = 7.5 \text{ Nm}$



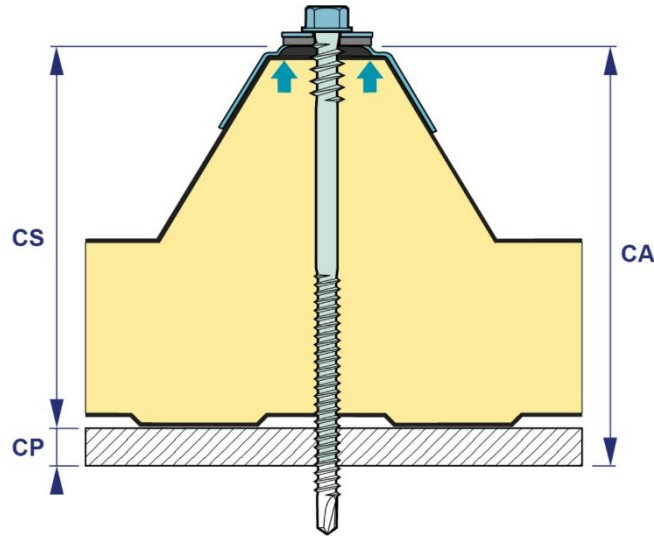
- Pull-out resistance (Pk) in accordance with the NF P 30-310 standard:

Thickness of the support Steel	Pk to daN
S320 - 1.5 mm	249
S320 - 2 mm	423
S320 - 2.5 mm	651
S235 - 3 mm	726
S235 - 4 mm	1073

The values indicated do not include safety factors



DIMENSIONS & CODES



Ø x L (mm)	CP (mm)	CS mini (mm)	Max turnover (mm)	Hex Head	VULCA washer	Cond.	Code Natural	Code Painted
5.5 x 70	1.5 to 4	27	51	8	-	100	378 000*	-
5.5 x 85	1.5 to 4	42	66	8	-	100	378 001*	-
5.5 x 85 + VI 16	1.5 to 4	40	64	8	16	100	378 041	378 051
5.5 x 85 + VI 19	1.5 to 4	40	64	8	19	100	378 061	378 071
5.5 x 85 + VI 22	1.5 to 4	39	63	8	22	100	378 081*	378 091*
5.5 x 110	1.5 to 4	67	91	8	-	100	378 002*	-
5.5 x 110 + VI 16	1.5 to 4	65	89	8	16	100	378 042	378 052
5.5 x 110 + VI 19	1.5 to 4	65	89	8	19	100	378 062	378 072
5.5 x 110 + VI 22	1.5 to 4	64	88	8	22	100	378 082*	-
5.5 x 110 + VI 25	1.5 to 4	64	88	8	25	100	378 102*	-
5.5 x 125	1.5 to 4	52	106	8	-	100	378 003*	378 013*
5.5 x 125 + VI 14	1.5 to 4	50	104	8	14	100	378 023*	378 033*
5.5 x 125 + VI 16	1.5 to 4	50	104	8	16	100	378 043	378 053
5.5 x 125 + VI 19	1.5 to 4	50	104	8	19	100	378 063	378 073
5.5 x 125 + VI 22	1.5 to 4	49	103	8	22	100	378 083*	378 093*
5.5 x 125 + VI 25	1.5 to 4	49	103	8	25	100	378 103*	-
5.5 x 145	1.5 to 4	72	126	8	-	100	378 004*	-
5.5 x 145 + VI 16	1.5 to 4	70	124	8	16	100	378 044	378 054
5.5 x 145 + VI 19	1.5 to 4	70	124	8	19	100	378 064	378 074
5.5 x 145 + VI 22	1.5 to 4	69	123	8	22	100	378 084*	378 094*
5.5 x 175	1.5 to 4	102	156	8	-	100	378 005*	378 015*
5.5 x 175 + VI 16	1.5 to 4	100	154	8	16	100	378 045	-
5.5 x 175 + VI 19	1.5 to 4	100	154	8	19	100	378 065	378 075
5.5 x 175 + VI 22	1.5 to 4	99	153	8	22	100	378 085*	378 095*
5.5 x 195	1.5 to 4	122	176	8	-	100	378 006*	-
5.5 x 195 + VI 19	1.5 to 4	120	174	8	19	100	378 066	378 076
5.5 x 215	1.5 to 4	142	196	8	-	100	378 007*	-
5.5 x 215 + VI 19	1.5 to 4	140	194	8	19	100	378 067	378 077

Next

* Product not CE marked.

Ø : Nominal diameter - L : Length - CS_{mini} : Minimum build up - Maximum AC : Maximum build up - CP : Drilling capacity - Cond. : Packaging

Registration date: 09/07/2025 - Revision G

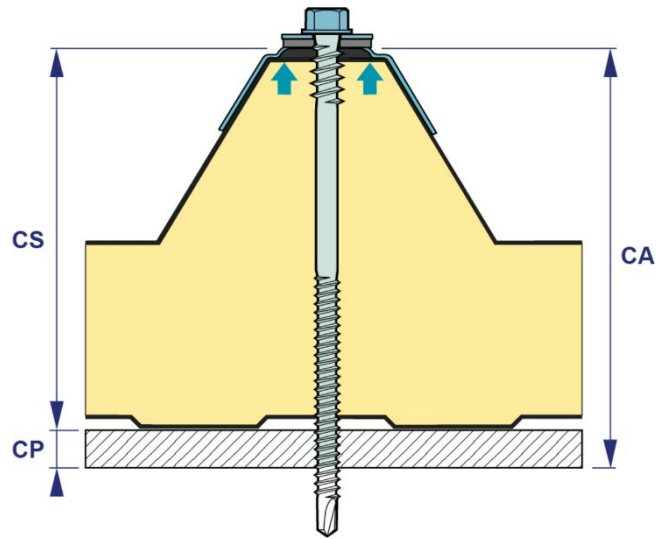
ETANCO is a member of:



LR ETANCO - Parc les Érables - Bât. 1 - 66 Route de Sartrouville

78231 Le Pecq Cedex France - www.etanco.eu

Tel: 01 34 80 52 00 - commercial.france@etanco.fr



Next

Ø x L (mm)	CP (mm)	CS mini (mm)	Max turnover (mm)	Hex Head	VULCA washer	Cond.	Code Natural	Code Painted
5.5 x 235	1.5 to 4	162	216	8	-	100	374 670*	-
5.5 x 235 + VI 19	1.5 to 4	160	214	8	19	100	374 671	374 672
5.5 x 255	1.5 to 4	182	236	8	-	100	374 675*	-
5,5,x 255 + VI 19	1.5 to 4	180	234	8	19	100	374 676	374 677
5.5 x 275	1.5 to 4	202	256	8	-	100	374 680*	-
5.5 x 275 + VI 19	1.5 to 4	200	254	8	19	100	374 681	374 682
5.5 x 295	1.5 to 4	222	276	8	-	100	374 685*	-
5.5 x 295 + VI 19	1.5 to 4	220	274	8	19	100	374 686	374 687

* Product not CE marked.

Ø : Nominal diameter - L : Length - CS_{mini}: Minimum build up - Maximum AC : Maximum build up - CP : Drilling capacity - Cond. : Packaging

CONFORMITY

- European Technical Assessment No. 25/0617 issued by the DIBT (for screws < to 235 mm with washer from Ø 16 to Ø 19 mm) according to European Assessment Document 330047-01-0602.
- European Technical Assessment No. 13/0180 issued by DIBT (for screws ≥ to 235 mm with washer ≥ Ø 19 mm) European Assessment Document 330047-01-0602.
- According to NF DTU 40.35: Ribbed plate roofing from coated steel sheets.
- According to NF DTU 40.36: Cover made of ribbed aluminum sheets, pre-painted or not.
- According to the RAGE Professional Recommendations: CLADDING in sandwich panels with two steel facings and a polyurethane core.
- The characteristic resistances are the result of tests carried out by the LR ETANCO laboratory.
- Reaction to fire: A1 according to NF EN 13501-1 (only for the screw).

MARKING & LABELLING

- On packaging, natural screw: DRILLNOX 4 DF TH8 A4 - Ø 5.5 x L + CODE.
- On packaging, painted screws: DRILLNOX 4 DF TH8 A4 - Ø 5.5 x L + COLOUR + CODE.
- On packaging, natural screw with washer: DRILLNOX 4 DF TH8 A4 - Ø 5.5 x L + VI Ø + CODE.
- On packaging, painted screw with washer: DRILLNOX 4 DF TH8 A4 - Ø 5.5 x L + VI Ø + COLOUR + CODE.

QUALITY CONTROL

- ISO 9001 certified quality management system according in force
- certificate.

NOTE

These products are intended for professional installers landlords whose the related service includes supply and installation. In accordance with rules and normative regulation, it's their responsibility to check that the use of these products is in conformity to themselves needs and their customers. They have to insure as well the adequacy of this material with their real operating conditions. The company excludes any guarantee for the use that does not respect these conditions. His responsibility is limited to the strict compliance with the specifications stipulated on the customer's purchase order. The guarantee is limited to the replacement of defective parts acknowledged by the Company's technical service, without workforce costs and travel expenses. It excludes material damage or physical injury and others direct or indirect damages, material or immaterial, which may result from defective parts including installation that not complying with the use for which they are designed and produced.