

## DRILLNOX WOOD DF STAINLESS STEEL A4 TH8 Ø 6,5 x L



ETE 25/0616  
ETE 13/0180

### PRODUCT DEFINITION

- Self-drilling screw Ø 6.5 mm bi-metal.
- Double thread net Ø 7 mm with clean stop to avoid deformation of the outer skin of the sandwich panel.
- Hexagonal head of 8 mm.
- Ø 10.5 mm flange.
- A4 stainless steel.
- Natural or painted head.
- 1.81 mm pitch for length < 240 mm (BDFN).
- 2.54 mm pitch for length ≥ 240 mm (BDF).
- Drill point.
- Can be mounted with a VULCA washer.

### APPLICATION

- Roofing: Fastening sandwich panels through the top of corrugation (with saddle washer) on wood frame.
- Cladding: Fastening sandwich panels on wood frame.
- Very aggressive environment (off the seafloor).
- Drilling capacity (CP): 0.75 to 4x0.75 mm of steel.

### MATERIAL & COATING

#### Material:

- Screw body: Austenitic stainless steel A4 – 1.4404 – AISI 316L.
- Drill point and first threads: Treated carbon steel.
- VULCA washer: A2 (VI) stainless steel + EPDM (Ethylene Propylene Diene Monomer).

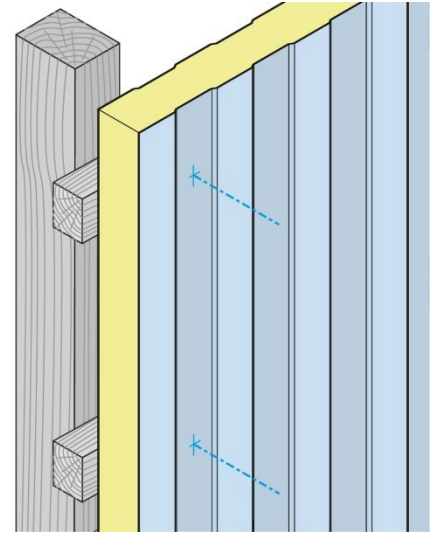
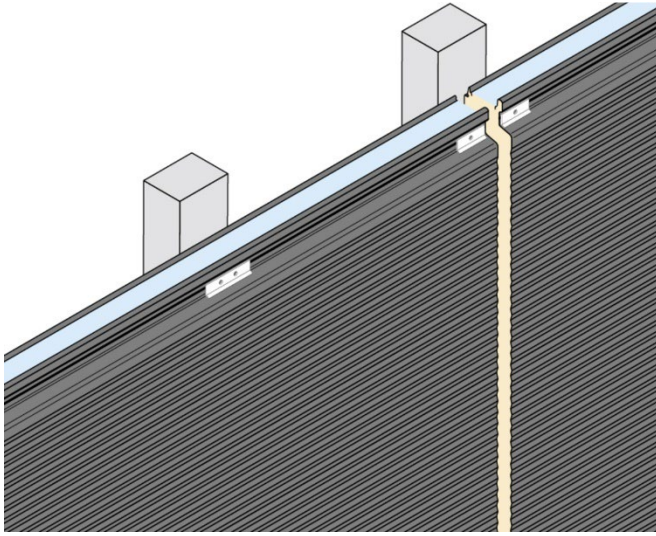
#### Painting:

- Epoxy, polyester or polyurethane paint (large range of colours available).
- Painting thickness according to TDS n° 4453.
- The colour coating only gives an aesthetic purpose. It does not affect nominal mechanical properties. On case of a coating deterioration, this product keeps its performance and does not derogate from the main function for which it is intended.

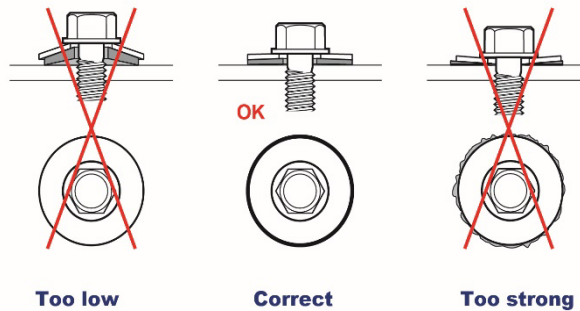
#### Corrosion resistance:

- Screw Body:  
By Kesternich test according to NF EN ISO 22479:  
Resist to more 30 cycles without the appearance of red rust.  
By salt spray test according to NF EN ISO 9227:  
No trace of red rust after 1000 hours.
- Drill point and 1st threads with surface coating:  
By salt spray test according to NF EN ISO 9227:  
No trace of red rust after 200 hours.

## INSTALLATION



- The assembly is done out using a FEIN ASCM 18-4 QM AS screwdriver with torque limiter and depth gauge with an 8 mm hexagonal socket.



### Unauthorized machines:

- Nutrunners, impact wrenches, impact drivers are not suitable for assembly work and are strictly forbidden to use.

### Recommended tools:

- FEIN ASCM 18-4 QM AS battery-powered screwdriver set + 2 batteries and 1 charger (code: 321 688).
- Depth stop for FEIN ASCM 18-4 QM AS (code: 321 686).
- 3rd Hand Set for TH8 Screws (Code: 320 153).
- 8mm LG 65mm hexagonal socket (Code: 323 500).

### Associated Products:

- DRILLNOX WOOD DF STAINLESS STEEL A2 TH8 Ø 6.5 x L (Refer to TDS n° 4004).
- Saddle washer for trapezoidal corrugation (Refer to roofing booklet).
- Saddle washer for Cladding (Refer to cladding booklet).

## PERFORMANCE

Mechanical properties of the EPDM of the VULCA washer:

- **Hardness** : 58 ± 5 SHORE A.

Drilling time :

- **Materials tested**: S355 JR structural steel.
- **Tools used**: FEIN ASCM 18-4 QM AS screwdriver with torque limiter and depth gauge.

Drilling test	Unit	Ø 6.5
Drilling Time	dry/mm	< 2
Rotational speed	RPM	2000 *
Axial load	dan	27

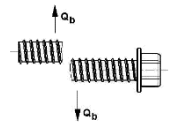
(\*) Actual under load: 1800 rpm

Characteristic resistances:

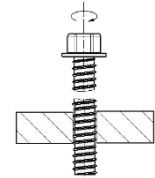
- Characteristic tensile strength:  $\bar{x} = 988 \text{ daN}$



- Characteristic shear strength - 0.6 x Rm:  $\bar{x} = 592 \text{ daN}$



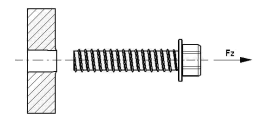
- Characteristic torque strength:  $\bar{x} = 12 \text{ Nm}$



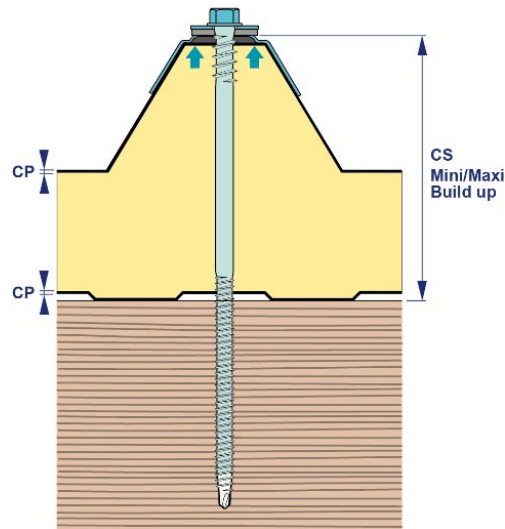
- Pull-out strengths (Pk) in accordance with the NF P 30-310 standard:

Fir Wood Support	Pk to daN
450 kg/m3 - Anchoring 50 mm	502

The values indicated do not include safety factors



## DIMENSIONS & CODES



Ø x L (mm)	CP (mm)	CS mini (mm)	CS maxi (mm)	Hex Head	VULCA washer	Cond.	Code Natural	Code Painted
6,5 x 75	0,75 à 4x0,75	17	25	8	-	100	374 649*	374 651*
6,5 x 75 + VI14	0,75 à 4x0,75	16	24	8	Ø 14	100	374 653*	-
6,5 x 75 + VI16	0,75 à 4x0,75	16	24	8	Ø 16	100	374 657	-
6,5 x 75 + VI19	0,75 à 4x0,75	15	23	8	Ø 19	100	374 658	-
6,5 x 75 + VI22	0,75 à 4x0,75	15	23	8	Ø 22	100	374 659*	374 674*
6,5 x 100	0,75 à 4x0,75	25	50	8	-	100	374 678*	374 679*
6,5 x 100 + VI16	0,75 à 4x0,75	24	49	8	Ø 16	100	374 683	374 684
6,5 x 100 + VI19	0,75 à 4x0,75	23	48	8	Ø 19	100	374 689	374 690
6,5 x 100 + VI22	0,75 à 4x0,75	23	48	8	Ø 22	100	374 691*	374 900*
6,5 x 122	0,75 à 4x0,75	50	72	8	-	100	374 692*	-
6,5 x 122 + VI19	0,75 à 4x0,75	48	70	8	Ø 19	100	374 694	374 695
6,5 x 142	0,75 à 4x0,75	72	92	8	-	100	374 699*	374 700*
6,5 x 142 + VI16	0,75 à 4x0,75	71	91	8	Ø 16	100	374 705	374 707
6,5 x 142 + VI19	0,75 à 4x0,75	70	90	8	Ø 19	100	374 711	374 715
6,5 x 142 + VI22	0,75 à 4x0,75	70	90	8	Ø 22	100	374 719*	374 901*
6,5 x 162	0,75 à 4x0,75	92	112	8	-	100	374 721*	374 739*
6,5 x 162 + VI16	0,75 à 4x0,75	91	111	8	Ø 16	100	374 754	-
6,5 x 162 + VI19	0,75 à 4x0,75	90	110	8	Ø 19	100	374 758	374 759
6,5 x 162 + VI22	0,75 à 4x0,75	90	110	8	Ø 22	100	374 760*	-
6,5 x 177	0,75 à 4x0,75	112	127	8	-	100	374 761*	374 762*
6,5 x 177 + VI16	0,75 à 4x0,75	111	126	8	Ø 16	100	374 763	-
6,5 x 177 + VI19	0,75 à 4x0,75	110	125	8	Ø 19	100	374 764	-
6,5 x 177 + VI22	0,75 à 4x0,75	110	125	8	Ø 22	100	374 765*	374 766*
6,5 x 200	0,75 à 4x0,75	127	150	8	-	100	374 768*	374 769*
6,5 x 200 + VI19	0,75 à 4x0,75	125	148	8	Ø 19	100	374 783	374 784
6,5 x 200 + VI22	0,75 à 4x0,75	125	148	8	Ø 22	100	374 799*	-
6,5 x 220	0,75 à 4x0,75	147	170	8	-	100	374 820*	374 835*
6,5 x 220 + VI19	0,75 à 4x0,75	145	168	8	Ø 19	100	374 864	374 865

Suite ↪

\* Product not CE marked.

Ø: Nominal diameter - L: Length - CS<sub>minimum</sub>: Minimum Build up - CS<sub>maxi</sub>: Maximum Build up - CP: Drilling capacity - Cond.: Packaging

Registration date: 19/03/2025 - Revision H

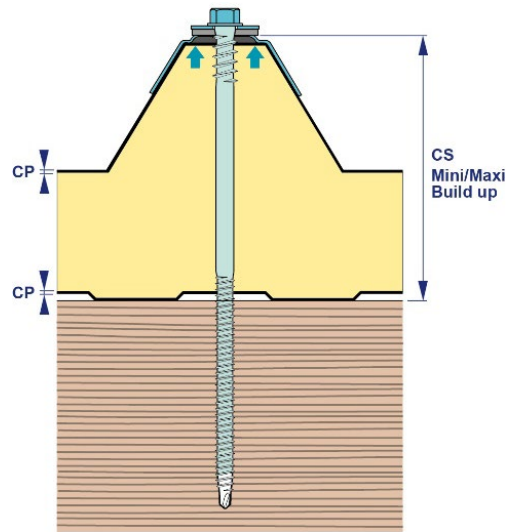
LR ETANCO is a member of:



LR ETANCO - Parc les Érables - Bât. 1 - 66 Route de Sartrouville

78231 Le Pecq Cedex France - [www.etanco.eu](http://www.etanco.eu)

Tel: 01 34 80 52 00 - [commercial.france@etanco.fr](mailto:commercial.france@etanco.fr)



Next

Ø x L (mm)	CP (mm)	CS mini (mm)	CS maxi (mm)	Hex Head	VULCA washer	Cond.	Code Naturel	Code Painted
6,5 x 240	0,75 à 4x0,75	167	190	8	-	100	374 785*	-
6,5 x 240 + VI16	0,75 à 4x0,75	166	189	8	Ø 16	100	374 788*	-
6,5 x 240 + VI19	0,75 à 4x0,75	165	188	8	Ø 19	100	374 786	374 787
6,5 x 260	0,75 à 4x0,75	187	210	8	-	100	374 790*	374 793*
6,5 x 260 + VI19	0,75 à 4x0,75	185	208	8	Ø 19	100	374 791	374 792
6,5 x 280	0,75 à 4x0,75	207	230	8	-	100	374 795*	-
6,5 x 280 + VI19	0,75 à 4x0,75	205	228	8	Ø 19	100	374 796	374 797
6,5 x 300	0,75 à 4x0,75	227	250	8	-	100	374 800*	-
6,5 x 300 + VI19	0,75 à 4x0,75	225	248	8	Ø 19	100	374 801	374 802

\* Product not CE marked.

Ø: Nominal diameter - L.: Length - CS<sub>minimum</sub>: Minimum Build up - CS<sub>maxi</sub>: Maximum Build up - CP: Drilling capacity - Cond.: Packaging

## CONFORMITY

- European Technical Assessment n° 25/0616 issued by the DIBT (for screws < 240 mm with washer of Ø 16 to Ø 19 mm) referring European Technical Assessment Document 330046-01-0602.
- European Technical Assessment n° 13/0180 issued by the DIBT (for screws ≥ 240 mm with washer ≥ Ø 19 mm) referring European Technical Assessment Document 330047-01-0602.
- According to the NF DTU 40.35: Ribbed plate roofing from coated steel sheets.
- According to the NF DTU 40.36: Cover made of ribbed aluminium sheets, pre-painted or not.
- According to the RAGE Professional Recommendations: CLADDING in sandwich panels with two steel facings and a polyurethane core.
- The characteristic resistances are the result of tests carried out by the LR ETANCO laboratory.
- Reaction to fire: A1 according to NF EN 13501-1 (only for the screw).

## MARKING & LABELLING

- On packaging, natural screws: DRILLNOX WOOD DF TH8 A4 - Ø 6.3 x L + CODE.
- On packaging, painted screw: DRILLNOX WOOD DF TH8 A4 - Ø 6.3 x L + COLOUR + CODE.
- On packaging, natural screw with washer: DRILLNOX WOOD DF TH8 A4 - Ø 6.3 x L + VI Ø + CODE.
- On packaging, painted screws with washer: DRILLNOX WOOD DF TH8 A4 - Ø 6.3 x L + VI Ø + COLOUR + CODE.

## QUALITY CONTROL

- ISO 9001 certified quality management system according in force certificate.

## NOTE

These products are intended for professional installers landlords whose the related service includes supply and installation. In accordance with rules and normative regulation, it's their responsibility to check that the use of these products is in conformity to themselves needs and their customers. They have to insure as well the adequacy of this material with their real operating conditions. The company excludes any guarantee for the use that does not respect these conditions. His responsibility is limited to the strict compliance with the specifications stipulated on the customer's purchase order. The guarantee is limited to the replacement of defective parts acknowledged by the Company's technical service, without workforce costs and travel expenses. It excludes material damage or physical injury and others direct or indirect damages, material or immaterial, which may result from defective parts including installation that not complying with the use for which they are designed and produced.

Registration date: 19/03/2025 - Revision H

LR ETANCO is a member of:



LR ETANCO - Parc les Érables - Bât. 1 - 66 Route de Sartrouville

78231 Le Pecq Cedex France - [www.etanco.eu](http://www.etanco.eu)

Tel: 01 34 80 52 00 - [commercial.france@etanco.fr](mailto:commercial.france@etanco.fr)