

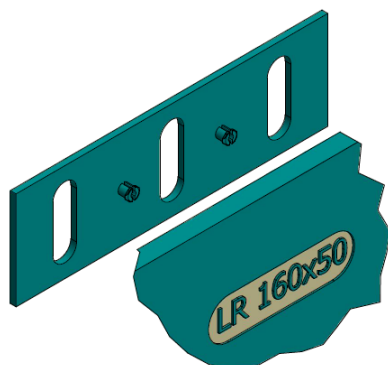
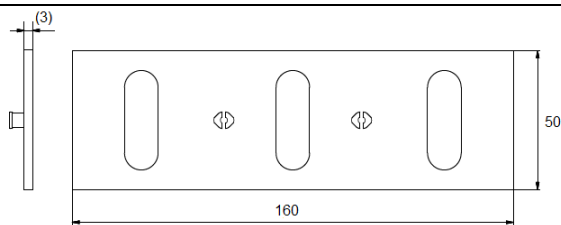
Manufacturer: **ETANCO** (FRANCE)

Parc les Erables – Bât 1 – 66 route de Sartrouville – BP 49 – 78231 LE PECQ Cedex

Tel.: +33 (0)1 34 80 52 00 – Fax: +33 (0)1 30 71 01 89

**Product name:**

## **THERMOSTOP WEDGE ISOLALU+ LR160x50**



**Application:**

A plastic wedge for making a thermal break between the base and the aluminium bracket

**Dimensions:**

160x50x3 mm

The wedge is compatible with ISOLALU+ LR160 bracket

Technical data sheet of ISOLALU+ LR160: TDS n° 4342

**Technical specifications:**

**Material:**

PA 6 GF30 (Polyamide 6, fiberglass 30 %)

**Thermal conductivity:**

0,28 W/(m.K)

**Compressive strength:**

100 N/mm<sup>2</sup> (Elasticity modul in tensile = 5500 MPa)

**Labelling:**

On packaging: THERMOSTOP WEDGE ISOLALU+ 160x50x3 + code

**Quality control:**

ISO 9001 : 2015

These products are intended for professional installers/landlords whose the related service includes supply and installation. In accordance with rules and normative regulation, it's their responsibility to check that the use of these products is in conformity to themselves needs and their customers. They have to insure as well the adequacy of this material with their real operating conditions. The company excludes any guarantee for the use that does not respect these conditions. His responsibility is limited to the strict compliance with the specifications stipulated on the customer's purchase order. The guarantee is limited to the replacement of defective parts acknowledged by the Company's technical service, without workforce costs and travel expenses. It excludes material damage or physical injury and others direct or indirect damages, material or immaterial, which may result from defective parts including installation that not complying with the use for which they are designed and produced.